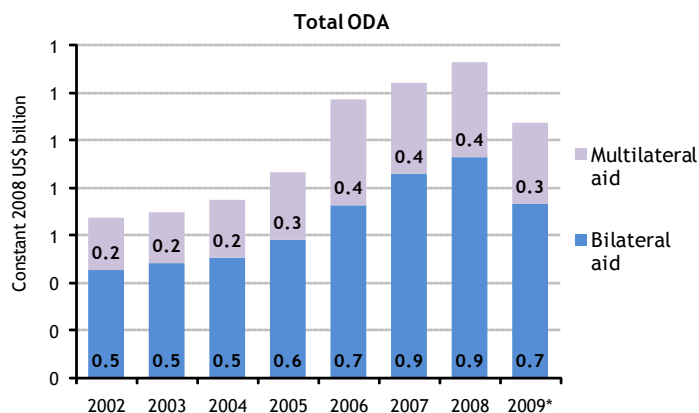
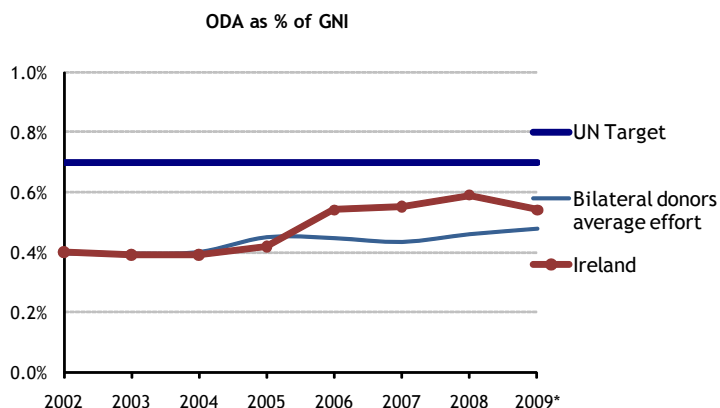


## Overview of Irish aid to education 2002-2008

*Ireland has increased its overall aid significantly since 2004, but important cuts were made in 2009. An significant share is allocated to education, with most going to basic education in low-income countries and in sub-Saharan Africa.*

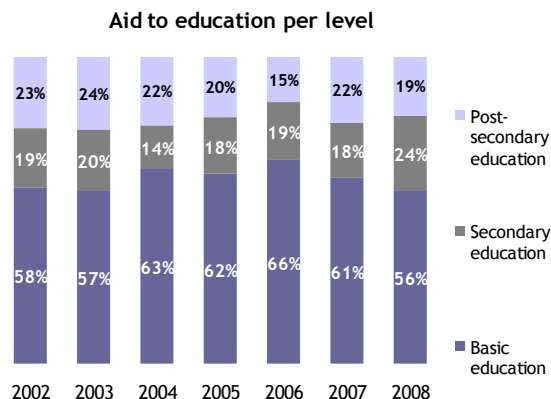
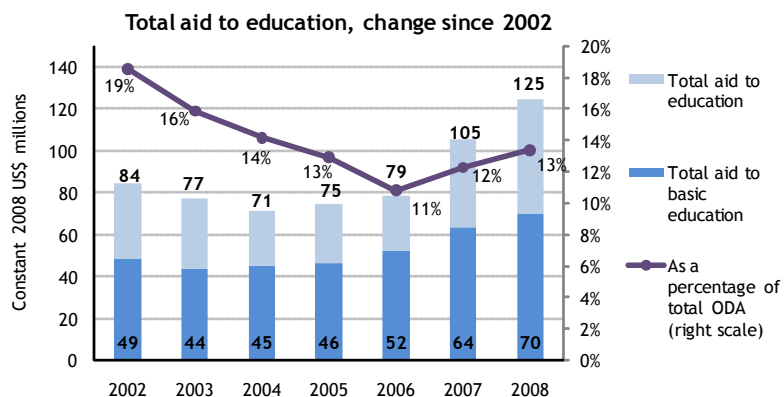
### Total Overseas Development Assistance (ODA)



ODA as a percentage of GNI has increased since 2004 and surpassed the average for bilateral donors but remains below the UN target.

Total ODA has been on an upward trend since 2002 but dropped significantly in 2009.

### Aid to education

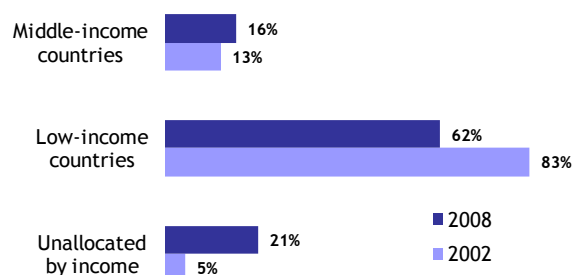


Disbursements of aid to basic education have been increasing in real terms since 2005. The share of total ODA allocated to education has been rising again after a drop between 2002 and 2006.

In 2008, basic education accounted for 56% of all disbursements of aid to education, which is above the average of all bilateral donors.

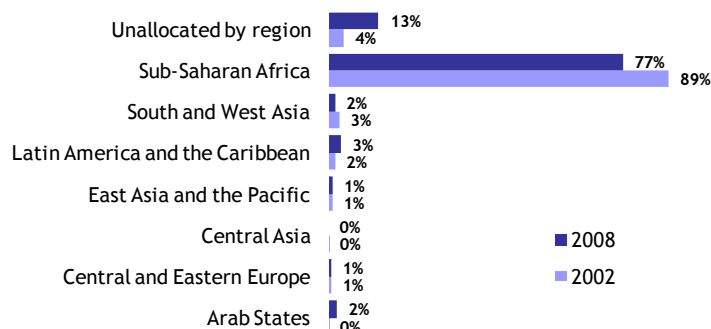
## Distribution of aid to basic education

Distribution by income group



In 2008, low-income countries received 62% of all aid to basic education.

Distribution by region



The share of aid to basic education spent in sub-Saharan Africa declined between 2002 and 2008 but remains high at 77%.

## Top 10 recipients of aid to basic education in 2008

	Total aid to basic education, US\$ millions	As a percentage of Irish aid to basic education
Zambia	10.7	15.3%
Uganda	9.6	13.7%
Bilateral, unspecified	9.3	13.2%
Mozambique	7.7	11.0%
Africa, regional	5.6	8.0%
Lesotho	3.3	4.7%
Kenya	3.0	4.3%
South Africa	2.4	3.4%
United Republic of Tanzania	2.3	3.2%
Ethiopia	1.9	2.8%

### About the data

These analyses were developed by the Education for All Global Monitoring Report team in June 2010. Total ODA figures are based on data from the OECD-DAC On-line Database on Annual Aggregates, and aid to education figures on the Creditor Reporting System (CRS) On-line Database on Aid Activities. All figures are disbursements, which record the actual international transfer of financial resources or of goods or services valued by the donor, and are expressed in constant 2008 US\$.

#### Bilateral vs multilateral ODA:

Aid given by bilateral donors to the core budget of multilateral organisations is included under multilateral ODA.

However, aid given by a bilateral donor to multilateral organisations for a specific sector (e.g. education) is included as bilateral aid from the donor.

#### Definition of total aid to education and total aid to basic education:

Total aid to education includes 20% of General Budget Support

Total aid to basic education includes 10% of General Budget Support and 50% of Education, level unspecified

\* Total ODA figures for 2009 are preliminary.